

# SUNRISE/SUNSET

LIGHT-FILTERING (L/F)  
<1% OPENNESS FACTOR

BLACKOUT (B/O)  
0% OPENNESS FACTOR

DECORATIVE

The sleek style of SUNRISE/SUNSET is accomplished by its beautiful linen-like material that softly filters natural light. This high-end natural-looking textile is also available in a blackout style to block nearly all light from entering interiors.





BURLAP CHESTER

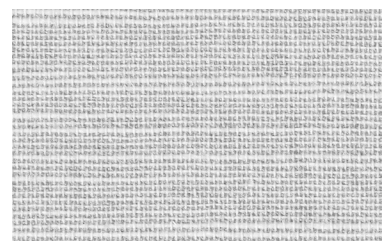
(L/F) 1104 (B/O) 1904



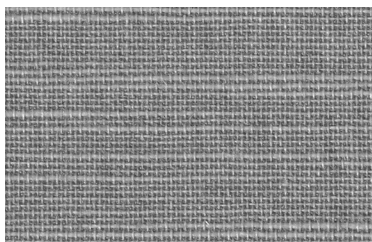
UNITED WHITE (L/F) 1111 (B/O) 1911



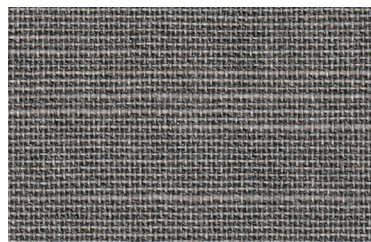
BEIGE WALES (L/F) 1112 (B/O) 1912



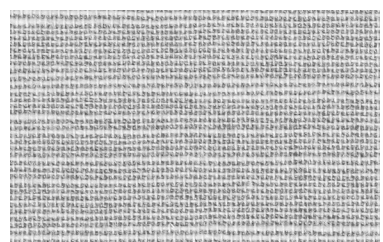
FOGGY LAKE (B/O) 1113 (L/F) 1913



YORK SHADOW (L/F) 1115 (B/O) 1915



DARK TRAIN (L/F) 1116 (B/O) 1916



GRAY CHESTER (L/F) 1114 (B/O) 1914

\* (L/F) stands for light-filtering and (B/O) stands for blackout

## FABRICATION METHODS

---

Cutting: Cold Cut, Ultrasonic, Crush Cut or Laser

Seaming / Hemming: Thermal, High-Frequency, Ultrasonic or Sewing.

## PRODUCT SPECIFICATIONS

---

COMPOSITION	100% Polyester
ROLL WIDTH	118"
ROLL LENGTH	33 yd
WEIGHT / YD <sup>2</sup>	(L/F) 6.48 oz/yd <sup>2</sup> (B/O) 9.72 oz/ yd <sup>2</sup>
THICKNESS	(L/F) .016" ± 5% (B/O) .020" ± 5%
COLOR FASTNESS	4.5 (AATCC 16-2003)

## CARE AND CLEANING

---

Remove dust with vacuum cleaner or compressed air. Do not scrub. Do not use solvents or any abrasive substance which might damage the coating on the fabric. Clean with a sponge or a soft brush dipped in soapy water using mild detergent. Rinse with clean water. Leave the shade down until completely dry. You can also rub the fabric very gently with a clean white pencil eraser to remove small stains.

## CERTIFICATIONS, TESTS, AND WARRANTY

---

<b>CALIFORNIA TITLE 19</b>	<b>OEKO-TEX® STANDARD 100</b>	<b>UL GREENGUARD GOLD</b>	<b>ROHS COMPLIANT</b>	<b>10 YEAR WARRANTY</b>	<b>ASTM G-21 &amp; E-2180</b>
FLAME RETARDANT	FREE OF HARMFUL CHEMICALS	HEALTHY INDOOR AIR QUALITY	FREE OF HARMFUL METALS	QUALITY GUARANTEED	BACTERIA & FUNGAL RESISTANCE