

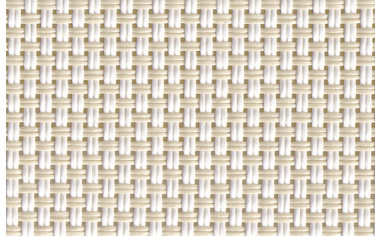
1% SCREEN

OPENNESS FACTOR 1%
SCREEN FABRIC

DFW
WINDOW COVERINGS

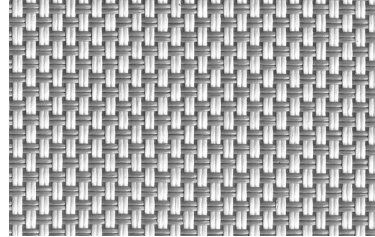
Known for its simplicity of design, balanced weave, application versatility, and overall excellent solar control performance. All colors are available in openness factors 1%, 3%, and 5% for ultimate daylight control.





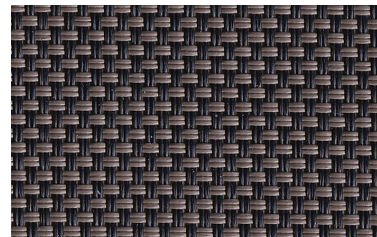
WHITE/LINEN

GSS-A2-102



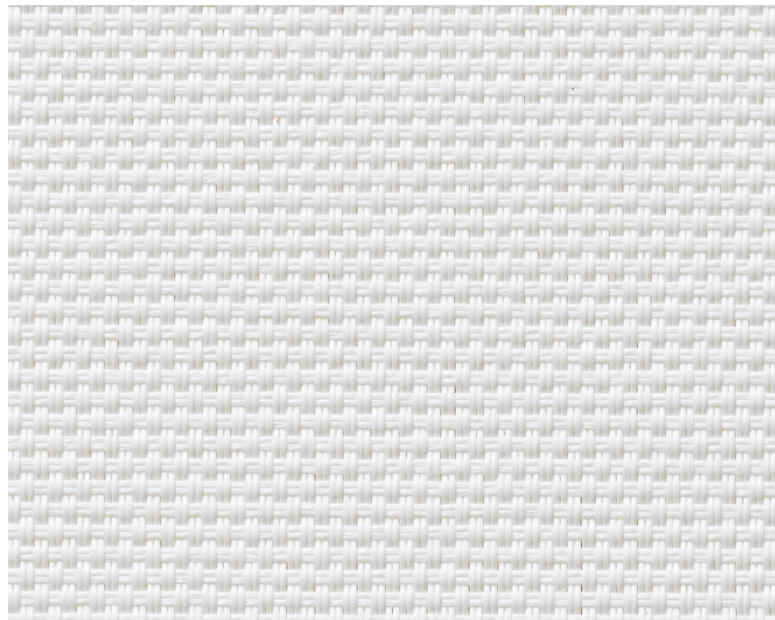
WHITE/GRAY

GSS-A2-103



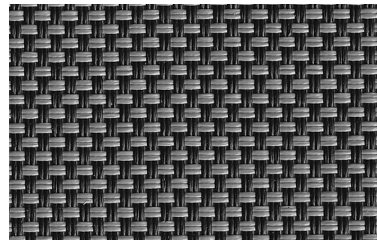
BLACK/BRONZE

GSS-A2-108



BRIGHT WHITE

GSS-A2-100



BLACK/GRAY

GSS-A2-110



BLACK/BLACK

GSS-A2-111

FABRICATION METHODS

Cutting: Cold Cut, Ultrasonic, Crush Cut or Laser

Seaming / Hemming: Thermal, High-Frequency, Ultrasonic or Sewing.

PRODUCT SPECIFICATIONS

COMPOSITION	30% Polyester + 70% PVC
ROLL WIDTH	98" / 118"
ROLL LENGTH	33 yd
WEIGHT / YD ²	13.84 oz/yd ²
THICKNESS	.030" ± 5%
COLOR FASTNESS	8 Grade (SGS)
YARN COUNT	64*40
BREAKING STRENGTH	Warp 2060 N/5cm Weft 1300 N/5cm

CARE AND CLEANING

Remove dust with vacuum cleaner or compressed air. Do not scrub. Do not use solvents or any abrasive substance which might damage the coating on the fabric. Clean with a sponge or a soft brush dipped in soapy water using mild detergent. Rinse with clean water. Leave the shade down until completely dry. You can also rub the fabric very gently with a clean white pencil eraser to remove small stains.

CERTIFICATIONS, TESTS, AND WARRANTY

CALIFORNIA TITLE 19 FLAME RETARDANT	OEKO-TEX® STANDARD 100 FREE OF HARMFUL CHEMICALS	UL GREENGUARD GOLD HEALTHY INDOOR AIR QUALITY	ROHS COMPLIANT FREE OF HARMFUL METALS	10 YEAR WARRANTY QUALITY GUARANTEED	ASTM G-21 & E-2180 BACTERIA & FUNGAL RESISTANCE	NFPA® 701-TM FIRE RETARDANT
---	---	--	--	--	--	---